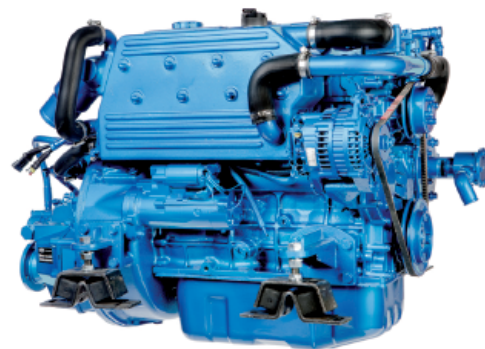




## MINI-74

Inboard Engine Base Mitsubishi

4 cylinders · 65 HP (47,9 kW) at 2.500 rpm



### Technical Specifications

Base	MITSUBISHI
Type	Diesel. 4 - Stroke Cycle
Number of Cylinders	4 in line
Intake System	Naturally Aspirated
Bore and Stroke	94 x 120 mm
Total Displacement	3.331 cc
Compression Ratio	22:1
Intermittent Power (ISO 3046/1)	65 HP (47,9 kW)
Continuous Power	62 HP (45,6 kW)
Rated RPM	2.500
Combustion System	Indirect
Starter motor	12 V (2,2 kW)
Alternator	95 A
Engine. Max. Install. Angle	25 intermittent. 15 continuous.
Direction of Rotation (Crankshaft)	Anti Clockwise (View from Stern)
Cooling System	Heat Exchanger Cooled
Dry Weight	312 Kg
Water Hose (Inside Diameter)	32 mm
Fuel Feed Hose (Inside Diameter)	8 mm
Fuel Return Hose (Inside Diameter)	-
Exhaust hose (inside Diameter)	75 mm
Certifications	EU RCD

### Gearbox

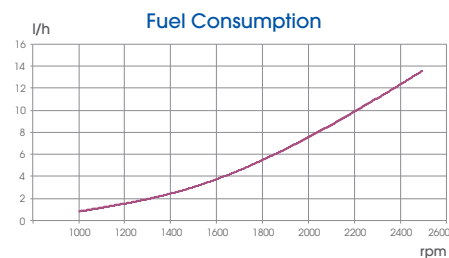
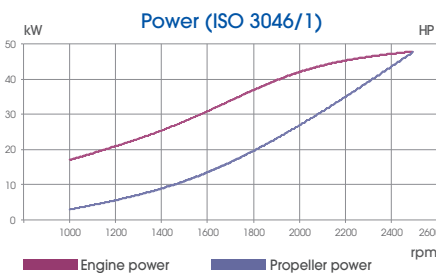
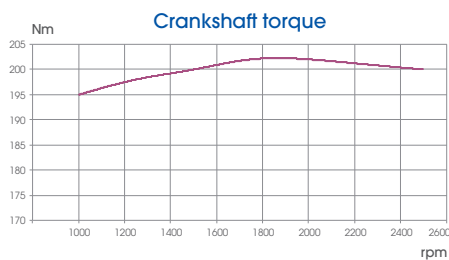
Model	TMC260	TM345	TM345A	TM93	TM93A
Type	Mechanical	Hydraulic	Hydraulic	Hydraulic	Hydraulic
Down Angle	-	-	8°	-	8°
Reduction Ratio (Pleasure)	1,54:1; 2,00:1; 2,47:1	2,00:1 - 2,47:1	2,00:1 - 2,47:1	2,09:1 - 2,40:1 - 2,77:1	2,09:1 - 2,40:1
Reduction Ratio (Cont. Duty)	-	-	-	2,09:1 - 2,40:1 - 2,77:1	2,09:1 - 2,40:1
Engine Weight with Gearbox	353 Kg	357 Kg	356 Kg	384 Kg	384 Kg



[www.solediesel.com](http://www.solediesel.com)

Detailed drawings, brochures and manuals are available on the web. © 2015. Solé Diesel. All rights reserved. Technical specifications, data and presentation are subjected to variations, changes and updates without prior notice. and without any obligation or liability whatsoever. Text and illustrations are not binding.

## Performance Curves



## Instrument panel



### Deluxe - TE3

- Tachometer
- Hour Meter
- Battery Warning Light
- Temperature Gauge
- Audible and visual alarm for low oil pressure and high engine temperature
- Voltmeter
- Oil Pressure Gauge
- Dimensions: 150 x 250 mm



### Double panel - TE4

- Tachometer
- Hour Meter
- Battery Warning Light
- Audible and visual alarm for low oil pressure and high engine temperature
- Key start / Stop
- Dimensions: 180 x 150 mm

## Accessories

### Standard Equipment

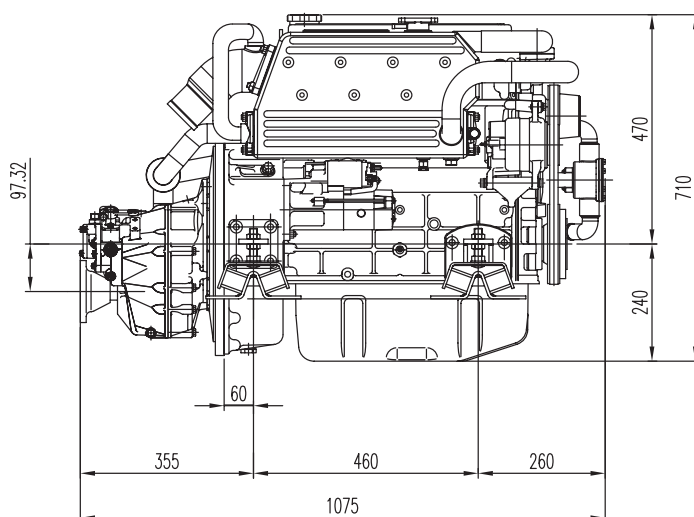
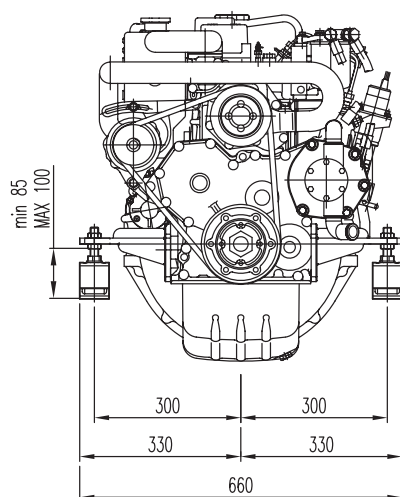
- Packaging
- Instrument Panel TE3
- 4m extension harness
- Anti Vibration Mounts
- Sump drain pump
- Owners manual

### Optional Equipment

- We have a wide range of available accessories and kits.
- Our technical department will calculate the propeller to optimize your engine.
- For additional information access our website.

## Dimensions

### MNI-74 with TM345



Authorized Dealer

Dimensions in mm



**SOLÉ, S.A.** C-243 b, km 2. 08760 Martorell. Barcelona  
Office Tel +34 93 775 14 00 - Fax +34 93 775 30 13

**solediesel.com - info@solediesel.com**

Detailed drawings, leaflets and manuals are available at solediesel.com. © 2015. Solé Diesel. All rights reserved. Texts and specifications are subject to change without notice and without any obligation or liability whatsoever.



ISO 9001  
**BUREAU VERITAS**  
Certification

